

AUXINFO

How To - Determine a Units PA activity

28

Log onto AUXINFO and click on Unit Activities cube to get this report.

Cognos PowerPlay Web Explorer **AUXDATA Unit Activities** COGNOS

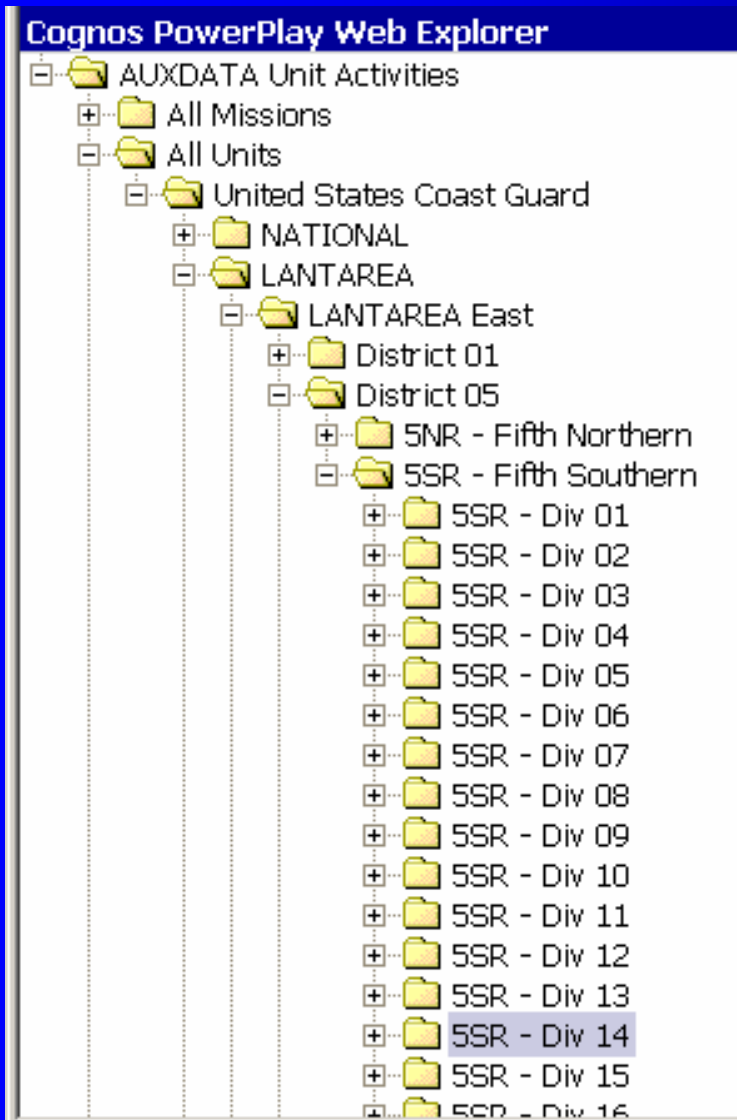
The AUXDATA Unit Activities cube displays statistics related to individual unit participation in Auxiliary missions. Hours performed to complete Auxiliary missions using Air, Boat, and Radio Facilities are available in addition to hours spent in support of Unit based missions such as Public Education or Public Affairs. Supplemental statistics such as ATON Verified, PE and PA related contributions, and other mission related parameters are also available. Upper level Flotilla, Division, and District statistics can also be extracted. Cube questions should be directed to ENS Justin Cassell, JCassell@comdt.uscg.mil (800) 842-8740 x 71010; or Harry Schoepe, BC-ISL@cgaux.org. Cube last refreshed on Monday, November 03, 2003.

[All Missions](#) | [All Units](#) | [All Facilities](#) | [All Unit Locations](#)

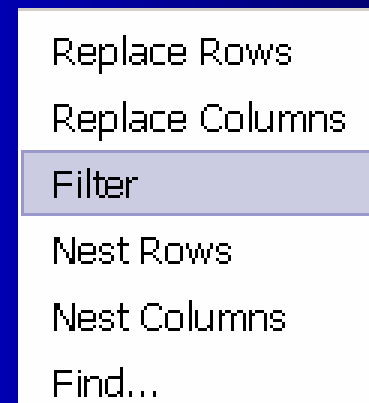
Mission Hours as values	United States Coast Guard	All Units
ATON - Aids To Navigation (30,31,32)	33,279.0	33,279.0
AUXADMN - Aux Administrative Support (99)	3,761,561.0	3,761,561.0
AUXMP - Marine Patrols (01a,01b,02,03,20a,22a,54a,55a)	457,484.0	457,484.0
CGADMN - Cq Administrative Support (08,92)	353,219.0	353,219.0
CGOPS - Cq Operational Support (07,20,21,22,26,54)	395,012.0	395,012.0
CVS - Commercial Vessel Safety	7,705.0	7,705.0
ELT - In Support Of Enforcement Of Laws And Treaties (27)	4,827.0	4,827.0
GOVSUP - Government Agency Support (41,42,43)	5,734.0	5,734.0
IA - International Affairs	2,700.0	2,700.0
ICE - Ice Operations Mission (53)	577.0	577.0
LO - Legislative Outreach	364.0	364.0

Done Internet

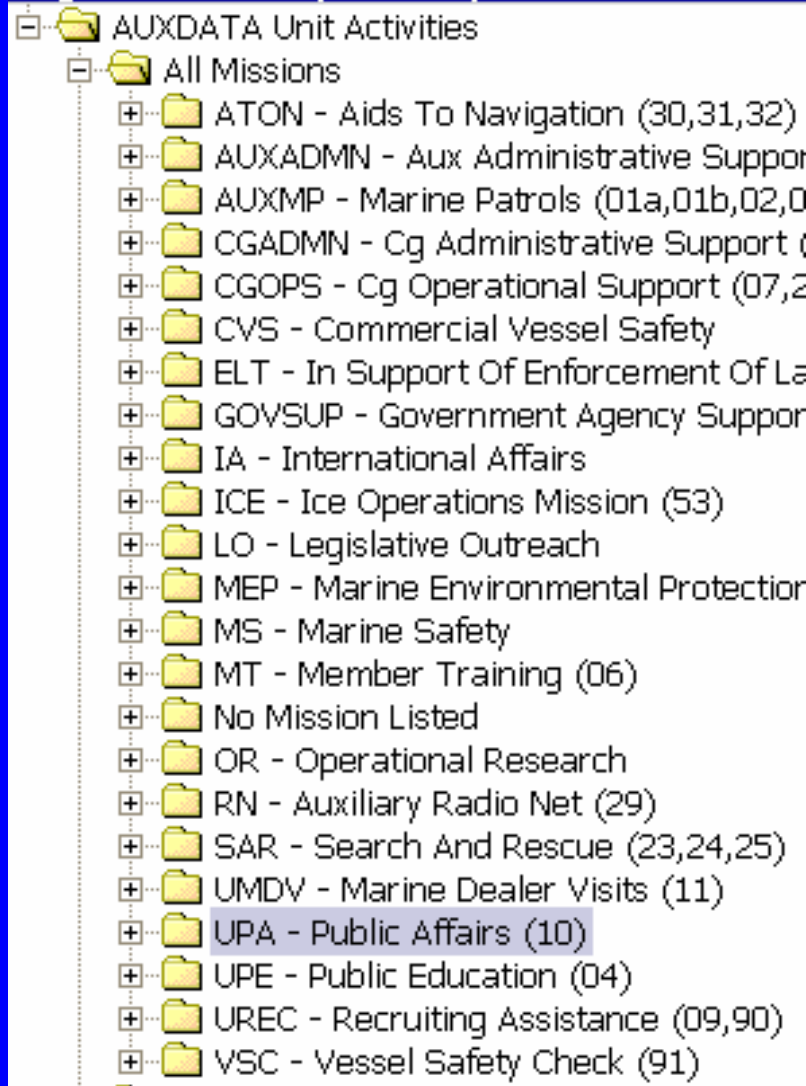
Start Cognos U... NEW AU... AUXDA... Microsoft ... 3:00 PM



Open “All Units” until the desired unit is reached. (Here 054-14.) Right click on the unit and left click on “Filter on the pop up menu.



Cognos PowerPlay Web Explorer



Open "All Missions" and right click on "UPA" then left click on "Filter" on the pop up menu.

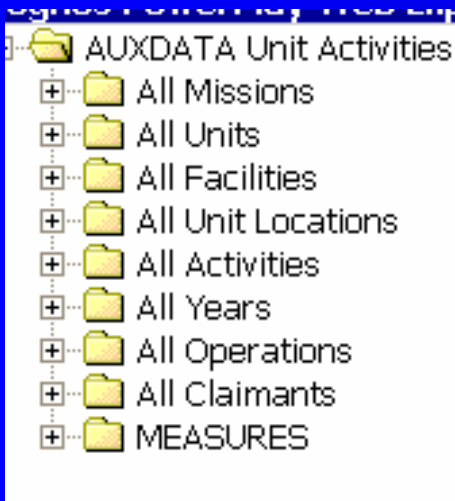
- Replace Rows
- Replace Columns
- Filter**
- Nest Rows
- Nest Columns
- Find...

Click "Swap" axis and Zero Suppress and you will have this report showing all of the PA missions and the hours spent in each.

Mission Hours as values	<u>ARTICLES - Articles Published (10a)</u>	<u>BOATINGSFTY - Information / Ysc Booths (10f)</u>	<u>DIRECTMAIL - Direct Mailings Sent (10h)</u>	<u>LECTURES - Public Lectures (10b)</u>	<u>OTHER - Other Pa Projects (10k)</u>	<u>POSTER - Posters/Fliers Distributed (10q)</u>	<u>PUBLIC - Public Appearances (10i)</u>	<u>PUBS - Publications Hours (10l)</u>
<u>054-14-01 MANASSAS</u>	0.0	15.0	0.0	0.0	0.0	0.0	0.0	0.0
<u>054-14-02 ALEXANDRIA</u>	0.0	25.0	0.0	5.0	26.0	0.0	10.0	2.0
<u>054-14-03 FAIRFAX</u>	2.0	47.0	0.0	0.0	0.0	0.0	0.0	0.0
<u>054-14-04 MT VERNON</u>	0.0	70.0	0.0	0.0	6.0	0.0	0.0	0.0
<u>054-14-05 COLONIAL BEACH</u>	0.0	0.0	0.0	0.0	0.0	0.0	20.0	0.0
<u>054-14-06 OCCOQUAN</u>	25.0	49.0	0.0	0.0	0.0	21.0	0.0	0.0
<u>054-14-07</u>	0.0	40.0	0.0	0.0	0.0	0.0	30.0	0.0

The report shows hours spent in each PA category

<u>ARTICLES</u> - Articles Published (10a)	<u>BOATINGSFTY</u> - Information / Vsc Booths (10f)	<u>DIRECTMAIL</u> - Direct Mailings Sent (10h)	<u>LECTURES</u> - Public Lectures (10b)	<u>OTHER -</u> Other Pa Projects (10k)	<u>POSTER -</u> Posters/Fliers Distributed (10g)	<u>PUBLIC -</u> Public Appearances (10j)	<u>PUBS -</u> Publications Hours (10l)	<u>RADIOPART</u> - Radio/Tv Programs (10c)	<u>WEB -</u> Website Maintenance (10d)
0.0	15.0	0.0	0.0	0.0	0.0	5.0	0.0	0.0	0.0
0.0	31.0	0.0	5.0	26.0	0.0	20.0	2.0	0.0	0.0



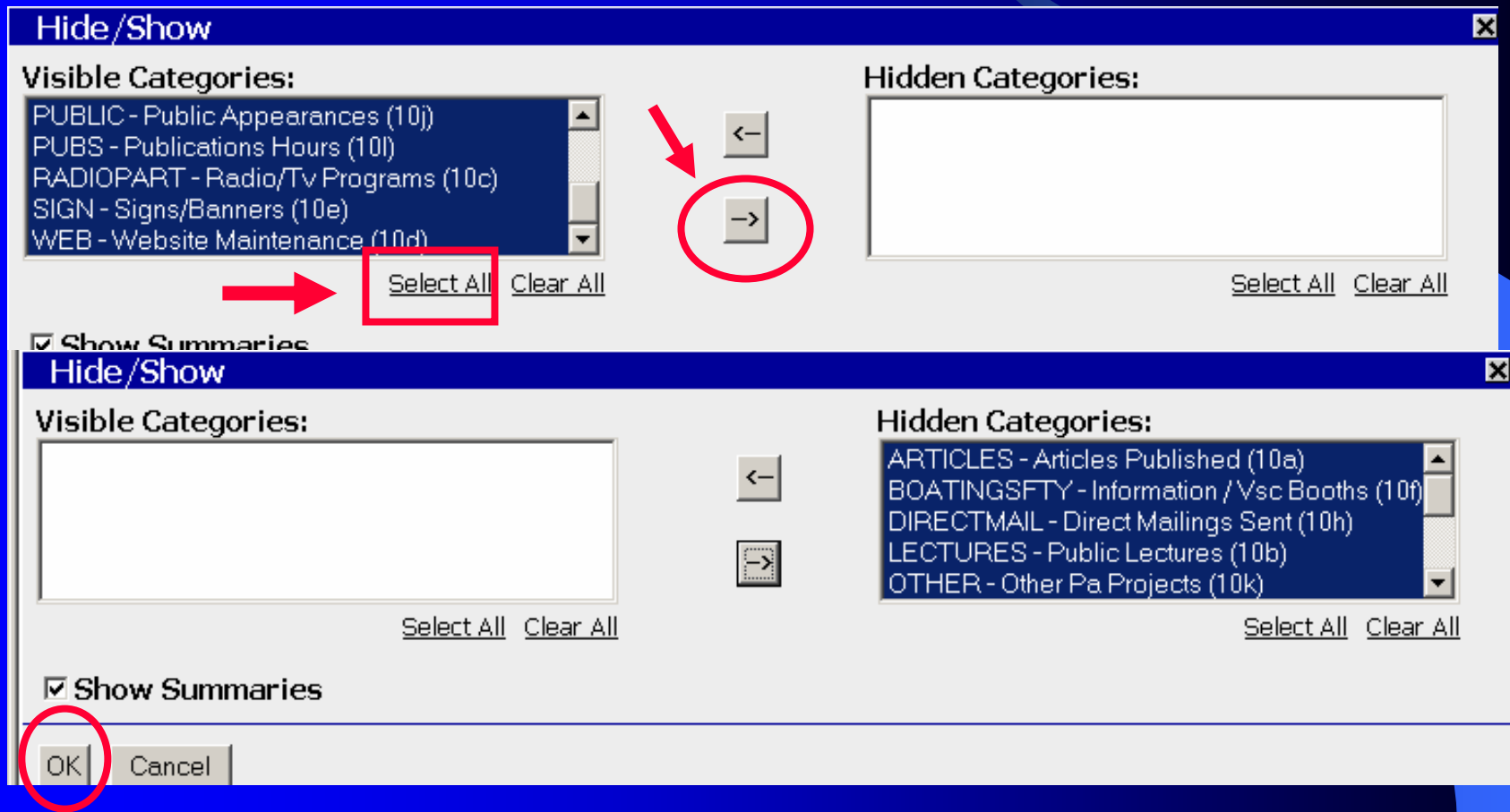
Right click "Measures" and left click on Nest Column. Mission count and PA Attendance is now shown, where applicable.

<u>BOATINGSFTY - Information /</u> <u>Vsc Booths (10f)</u>		
<u>Mission</u> <u>Hours</u>	<u>Mission</u> <u>Count</u>	<u>Public</u> <u>Affairs</u> <u>Attendance</u>
56.0	16	40

If you are only interested in the total PA hours, right click on one of the PA elements and left click on “Hide/Show” in the pop up menu.

Mission Hours as values	ARTICLES - Articles	BOATINGSFTY - Information /	DIRECTMAIL - Direct Mailings
<u>054-14-01</u> <u>MANASSAS</u>			0.0
<u>054-14-02</u> <u>ALEXANDRIA</u>			0.0
<u>054-14-03</u> <u>FAIRFAX</u>	2.0	47.0	0.0
<u>054-14-04</u> MT <u>VERNON</u>	0.0	70.0	0.0
<u>054-14-05</u>			

Click on "Select all" then the right facing arrow. All PA elements are moved to the right. Then click on "OK."

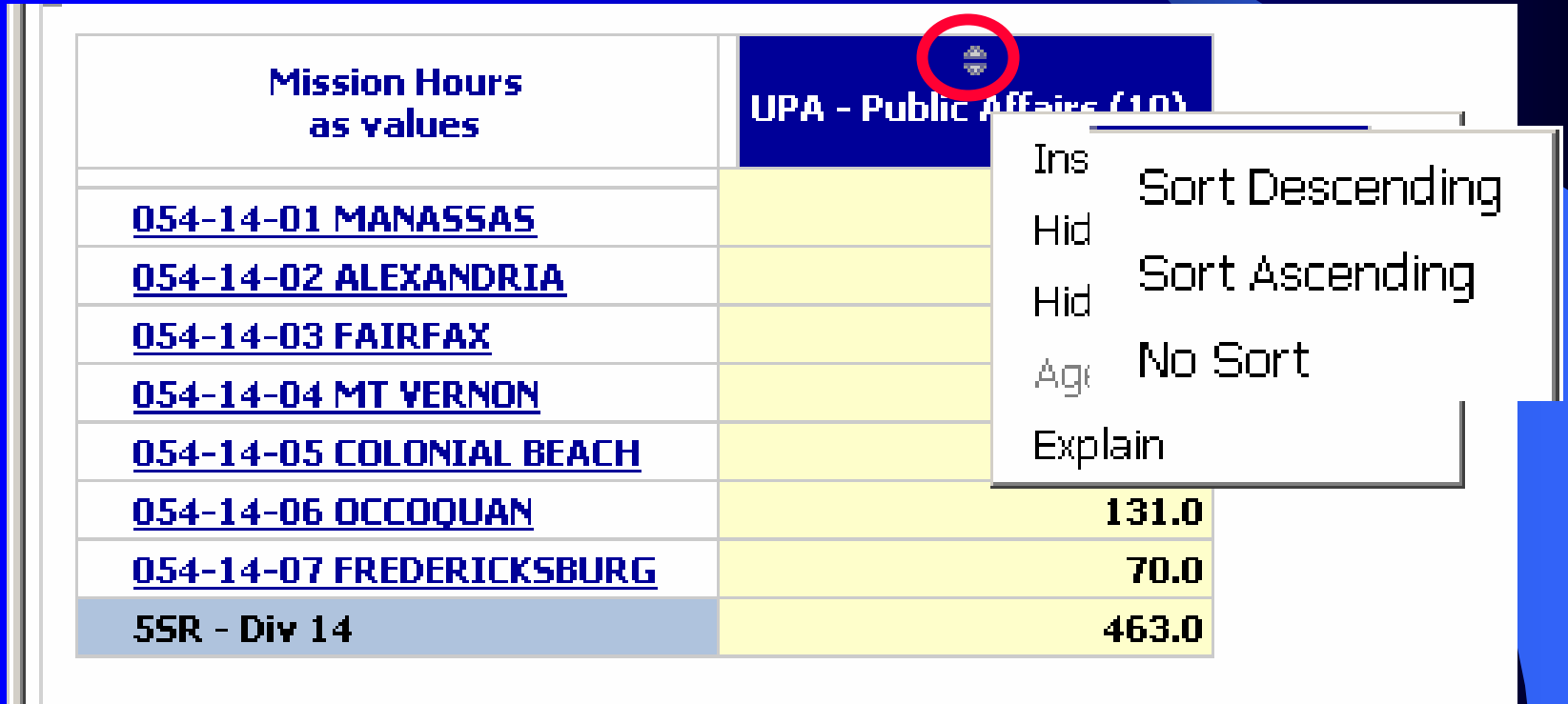


The report now shows the number of hours spent on all PA activities.

Mission Hours as values	UPA - Public Affairs (10)
<u>054-14-01 MANASSAS</u>	15.0
<u>054-14-02 ALEXANDRIA</u>	68.0
<u>054-14-03 FAIRFAX</u>	83.0
<u>054-14-04 MT VERNON</u>	76.0
<u>054-14-05 COLONIAL BEACH</u>	20.0
<u>054-14-06 OCCOQUAN</u>	131.0
<u>054-14-07 FREDERICKSBURG</u>	70.0
55R - Div 14	463.0

Right click on the UPA column, ignore the first pop up, left click on the two arrows and left click on "Sort Descending."

Mission Hours as values	UPA - Public Affairs (10)
054-14-01 MANASSAS	
054-14-02 ALEXANDRIA	
054-14-03 FAIRFAX	
054-14-04 MT VERNON	
054-14-05 COLONIAL BEACH	
054-14-06 OCCOQUAN	131.0
054-14-07 FREDERICKSBURG	70.0
55R - Div 14	463.0



The report now shows the hours in descending hours.

Mission Hours as values	UPA - Public Affairs (10)
<u>054-14-06 OCCOQUAN</u>	131.0
<u>054-14-03 FAIRFAX</u>	83.0
<u>054-14-04 MT VERNON</u>	76.0
<u>054-14-07 FREDERICKSBURG</u>	70.0
<u>054-14-02 ALEXANDRIA</u>	68.0
<u>054-14-05 COLONIAL BEACH</u>	20.0
<u>054-14-01 MANASSAS</u>	15.0
55R - Div 14	463.0